

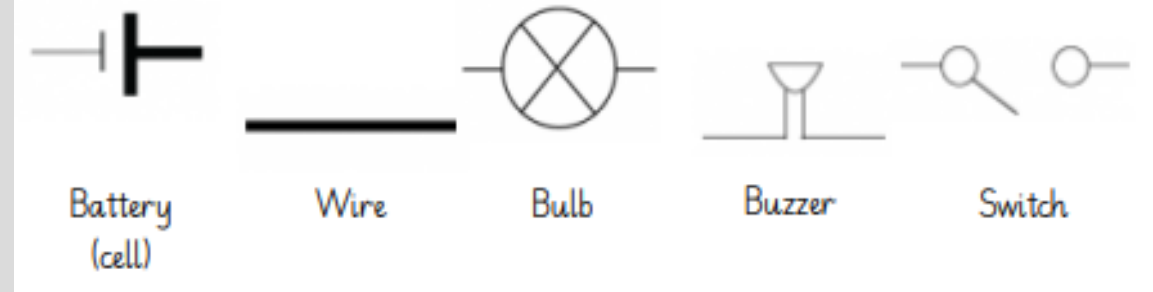
# Y4- Electricity Subject Knowledge Organiser

Circuit	A set of component connected to perform a function
Battery (cell)	Portable devices that stores and provides electricity
Bulb	Electrical component that emits light
Switch	Electrical component that is used to switch circuits on and off
Buzzer	Electrical component that emits sound
Wire	Thin strips of metal which conducts electricity
Electrical conductor	Material that allows electricity to flow through it
Electrical insulator	Material that prevents electricity from flowing through it
Current	The flow of electricity through a wire.

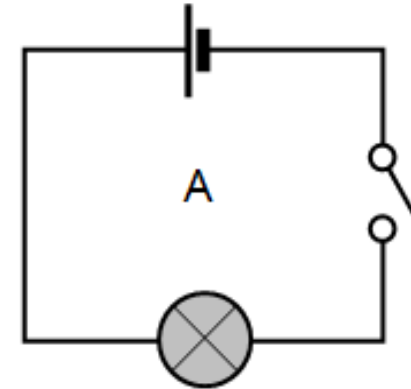
## Methods of Generating Electricity



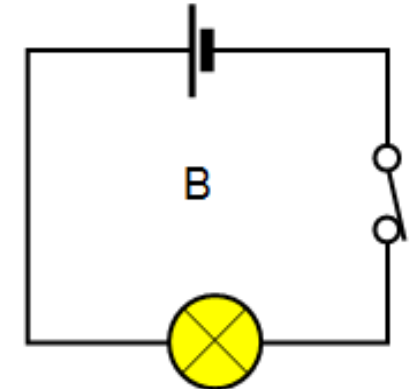
## Circuit Symbols



## Open circuit



## Closed circuit



Conductors	Insulators
Copper, iron, steel, silver, gold, water	Rubber, plastic, wool, paper